



## OnePlaceLive transforms Enterprise Content Management solutions for greater end user engagement by redefining how end users interact with SharePoint solutions to save and access content.

### Business challenge

Finding a location to save and access content in SharePoint is inefficient. This results in disengaged end users and poor solution adoption.

### OnePlaceLive solution

Redefine how end users save and access content efficiently in SharePoint solutions.

Enterprise Content Management (ECM) solutions delivered on your SharePoint platform, such as, an EDRMS, Project Management or Legal Case Management require end user adoption to be successful. ECM solutions and their underlying information architecture will vary - for example, a legal case management solution may contain a site collection for each client, a site for each case and a number of libraries/lists and document sets to save content.

Regardless of the information architecture, it is likely the same problem exists:

The process the end user must endure finding a location to save and access content is inefficient, time consuming and ultimately, results in disengaged end users and poor solution adoption. Worse still, users continue to save content in Outlook or network drives.

OnePlaceLive transforms your existing ECM solutions on the SharePoint platform to reengage end users without the need to modify the solutions or underlying information architecture.

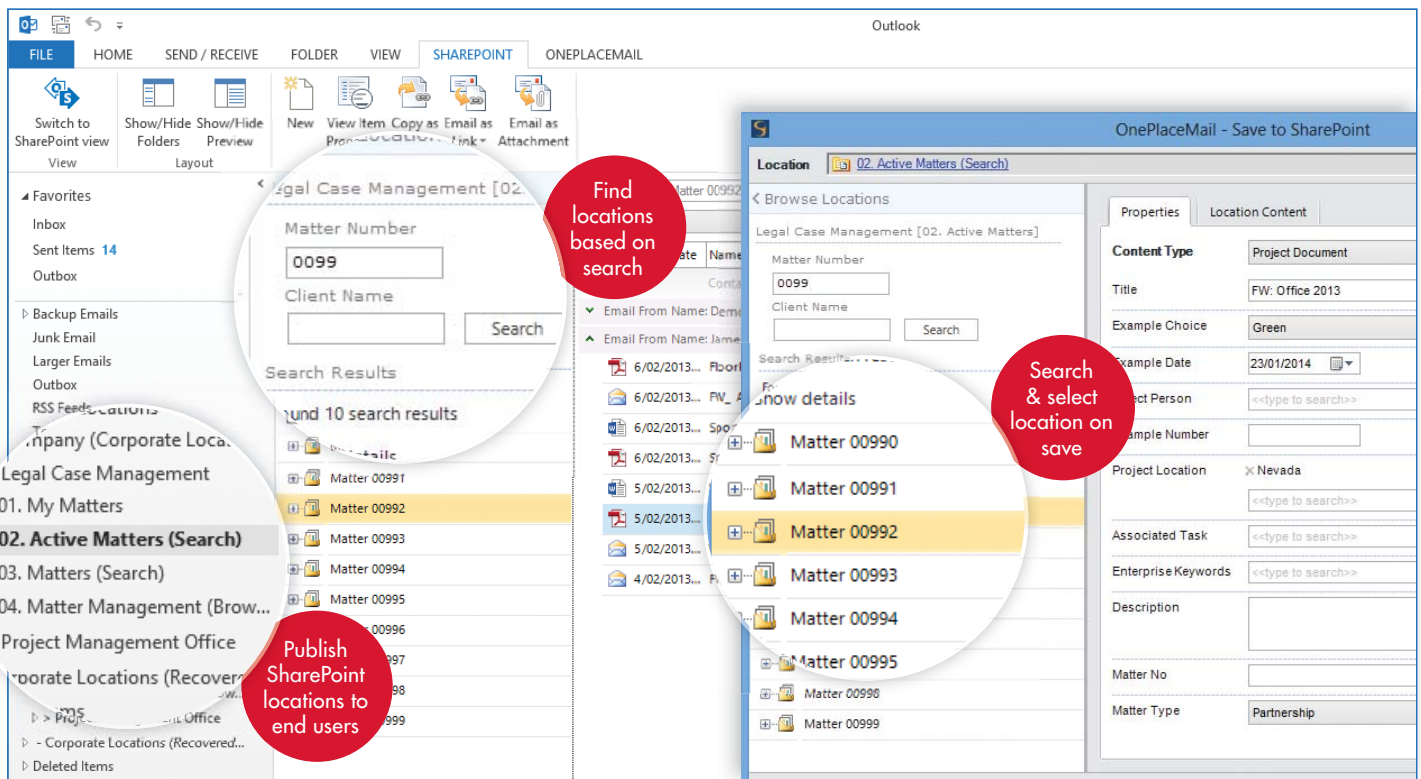
This is achieved by creating corporate profiles (e.g. Legal Case Management) and defining new search and browse locations to streamline the process of saving and accessing content. Corporate profiles can be published to SharePoint and made available for end users in client applications such as Outlook, File Explorer and Office.

OnePlaceLive search and browse locations redefine how end users save and access content efficiently in SharePoint solutions. This helps reengage end users for greater adoption and enables an ROI on your SharePoint platform.

## OnePlaceEnterprise suite - Enterprise ready solutions

- » Work within the bounds of SharePoint thresholds while delivering an amazing end user experience with OnePlaceLive
- » Integrate with Microsoft OneDrive
- » Business Connectivity Services / External Data columns
- » Terms & Taxonomy support including full type-ahead on enterprise keywords and managed metadata
- » Full SDK for systems integration
- » Enterprise search integration
- » Content type support
- » Email & document previews using Office Web Apps
- » Outlook Style interface to SharePoint
- » Support for Outlook, File Explorer and Microsoft Office integration

# OnePlaceLive product highlights



## Browse locations

Browse locations provide a new way of accessing existing SharePoint solutions and delivering relevant SharePoint locations to end users using an intuitive hierarchical interface.

When saving and accessing SharePoint content, display relevant locations by:

- » Leveraging different SharePoint library views, filtering and sorting to display only relevant document sets and folders
- » Leveraging SharePoint security to trim access to SharePoint Sites
- » Further filter locations in the hierarchical trees using OnePlaceMail and OnePlaceDocs.

## Search locations

Search locations use the power of search to present end users with relevant SharePoint locations (Sites, Libraries, Lists, Folders, and Document Sets) from across your entire SharePoint environment (Farm).

When saving and accessing SharePoint content, display relevant locations by:

- » Automatically executing search queries across the SharePoint environment
- » Provide end user input forms for solution specific searches, e.g. case/project number, name and region
- » Integrate with search locations using the SDK to extend the experience into other business processes.



## Central configuration and publishing

Centrally publish corporate profiles and relevant search and browse locations securely within SharePoint. These profiles are accessible in OnePlaceMail and OnePlaceDocs to make available for end users in applications such as Outlook, File Explorer and Office.

**Scinaptic Communications Pty Ltd**  
Phone: +61 2 9977 1312  
+1 425 502 6942 (US)

E-mail: [info@scinaptic.com](mailto:info@scinaptic.com)  
Web: [www.scinaptic.com](http://www.scinaptic.com)  
Twitter: [@OnePlaceMail](https://twitter.com/OnePlaceMail)

**Microsoft Partner**  
Gold Application Development